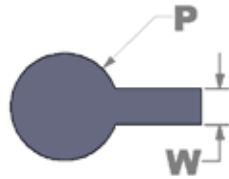


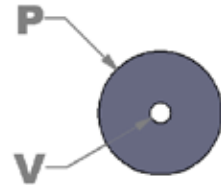
BATTERY CONTACTS PCB PAD (Suitable for TB-SERIES domes)

TB-SERIES SINGLE SIDED



DIAMETER	"W"	"P"
12mm	1.27	3.81

TB-SERIES DOUBLE SIDED



DIAMETER	"P"	"V"
12mm	3.81	0.64

V = Plated through hole

- Pattern shown is keep-out area for any solder masks and films.
- This drawing represent one of many possible layouts. Snaptron conveys this information for our customer support with the intent that customers are responsible for the final design of the PCB layout.